

---

# **Great Yarmouth Third River Crossing Order 202[\*]**

---

---

## **Document NCC/GY3RC/EX/005: Update to Works Plans**

---

**Planning Act 2008**

**Infrastructure Planning**

**The Infrastructure Planning (Examination Procedure) Rules 2010**

Planning Inspectorate Reference Number: TR010043

Author: Norfolk County Council

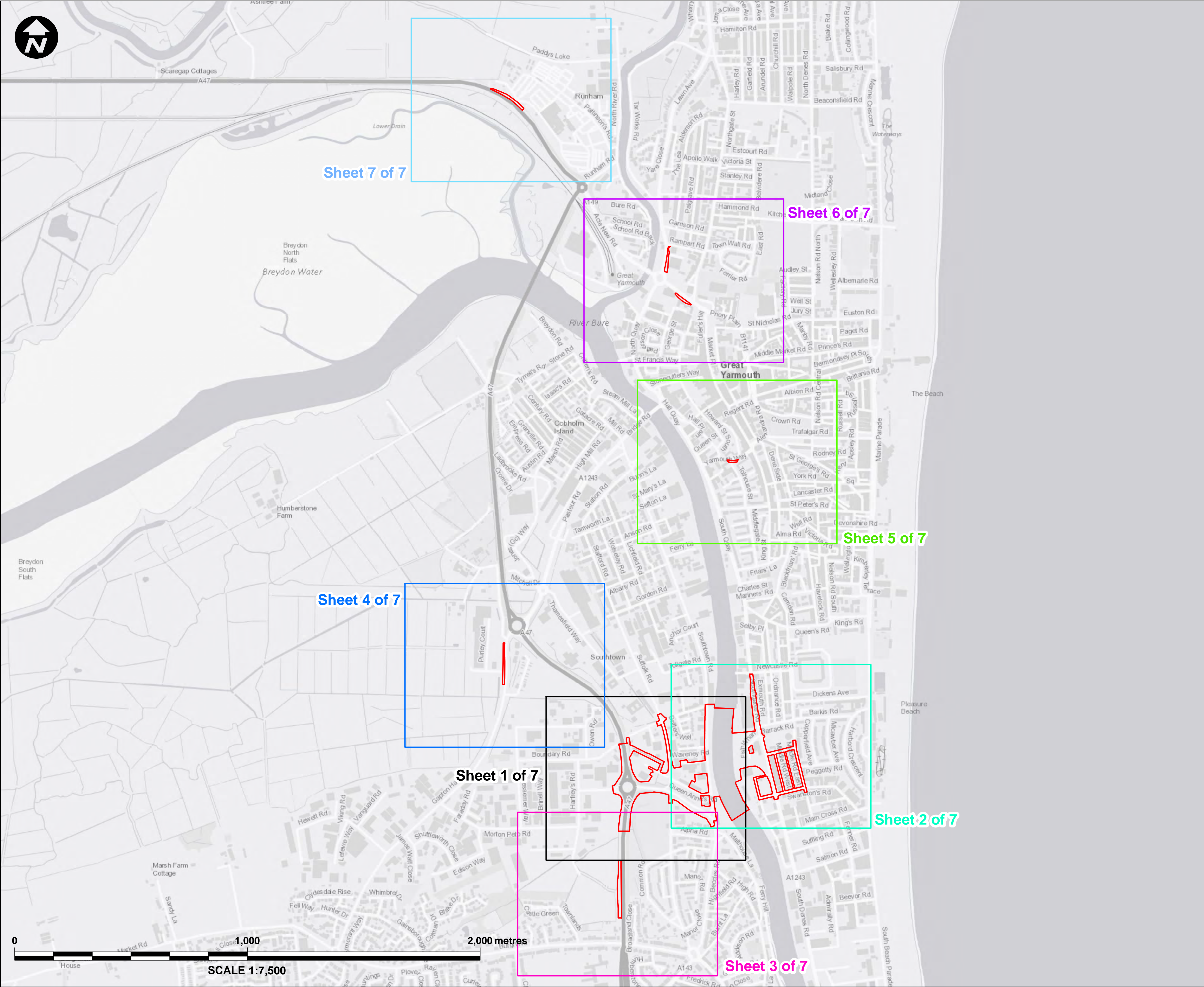
Document Reference: NCC/GY3RC/EX/005

Date: 13 September 2019



*This page is intentionally left blank*





**Key:**

- Order Limits
- Sheet 1 of 7
- Sheet 2 of 7
- Sheet 3 of 7
- Sheet 4 of 7
- Sheet 5 of 7
- Sheet 6 of 7
- Sheet 7 of 7

**NOTES:**  
1. This plan should be read in conjunction with the Development Consent Order and the documents it refers to.

Mapping reproduced by permission of Ordnance Survey on behalf of HMSO.  
© Crown copyright and database rights 2018 Ordnance Survey 100019340.


REVISION	DRAWN	CHECKED	APPROVED	DATE
DESCRIPTION				

**Norfolk** County Council

Tom McCabe  
Executive Director of  
Community and Environmental Services  
Norfolk County Council  
County Hall, Martineau Lane  
Norwich NR1 2SG

PROJECT TITLE  
**GREAT YARMOUTH  
THIRD RIVER CROSSING**

DRAWING TITLE  
**DCO DOCUMENT 2.6  
WORKS PLANS  
KEY PLAN  
(REGULATION 5(2)(j) & 5(4))**

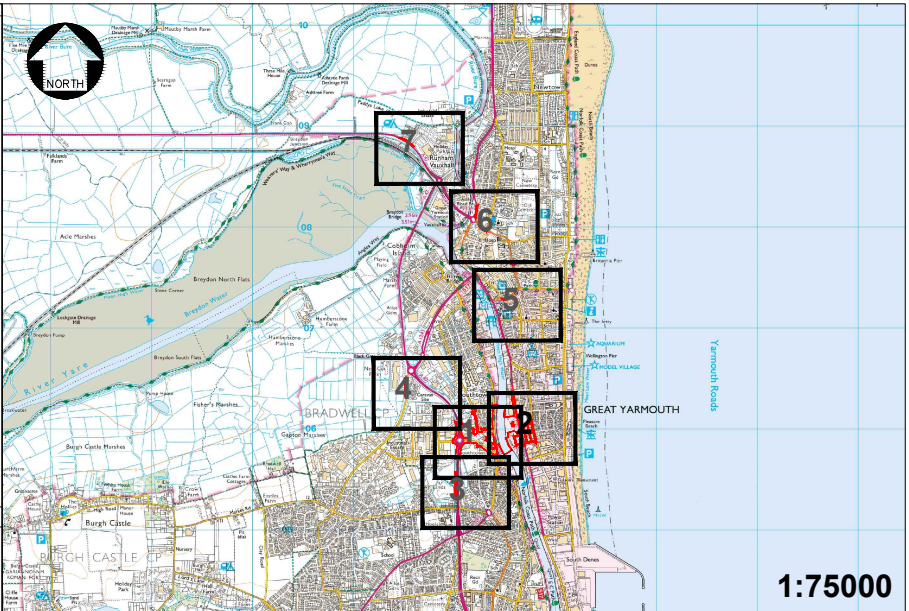
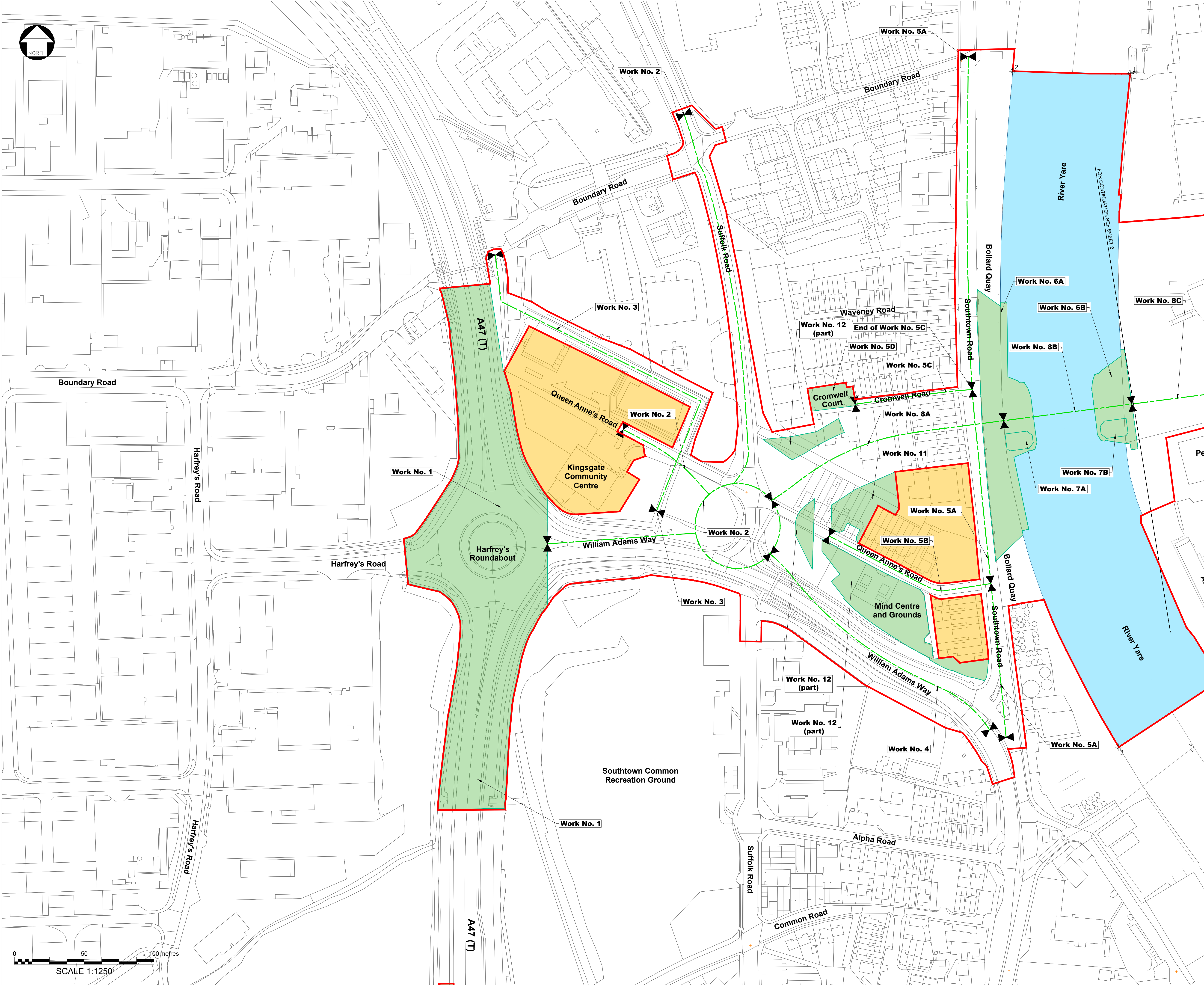
DRAWING STATUS  
**FOR DCO APPLICATION**

DRAWN	CHECKED	APPROVED	AUTHORISED
DE	MO	AG	MK

SCALE @ A1 SIZE	DATE	REVISION
1:7,500	11/04/2019	P00

DRAWING NUMBER  
**GYTRC-WSP-HGN-XX-DR-CB-1023**





**Key:**

- Order Limits
- Area excluded from Order Limits
- Start / End of Linear Work
- Linear Work Centre Line
- Non-Linear Work Limit of Deviation
- Area of Deemed Marine Licence
- Point reference to co-ordinates identifying the area to which the deemed marine licence relates

- Notes:**
1. The numbered linear and non-linear works are references to the works in Schedule 1 (Authorised Development) to the Development Consent Order.
  2. This plan should be read in conjunction with the Development Consent Order (DCO) and the documents it refers to, in particular the DCO article entitled 'Limits of Deviation' and DCO Schedule 1 (Authorised Development).

Mapping reproduced by permission of Ordnance Survey on behalf of HMSO.  
© Crown copyright and database rights 2018 Ordnance Survey 100019340.

P01	JT	MO	AG	04/09/2019
-----	----	----	----	------------

REVISION	DRAWN	CHECKED	APPROVED	DATE
DESCRIPTION				

 **Norfolk County Council**  
Tom McCabe  
Executive Director of  
Community and Environmental Services  
Norfolk County Council  
County Hall, Martham Lane  
Norwich NR1 2SG

**PROJECT TITLE**  
**GREAT YARMOUTH  
THIRD RIVER CROSSING**

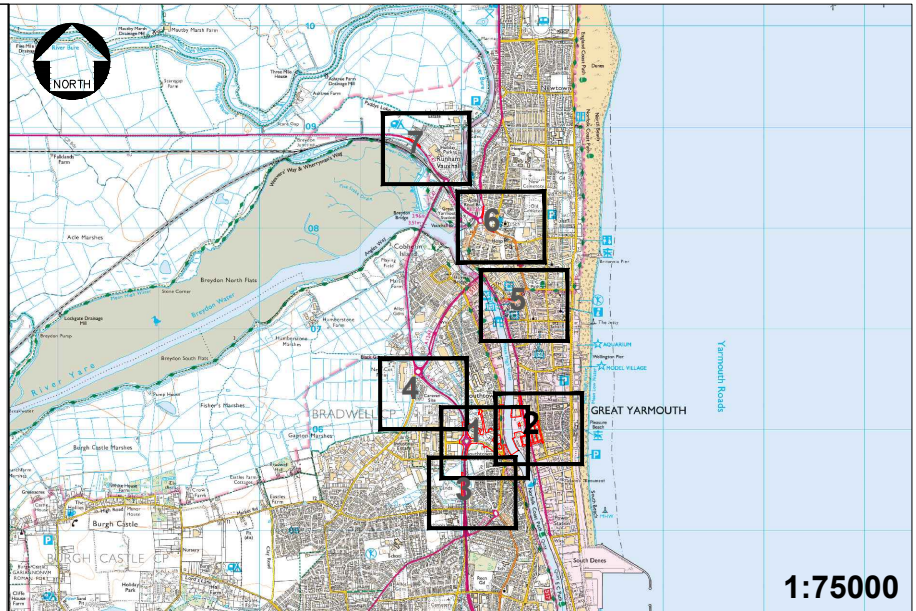
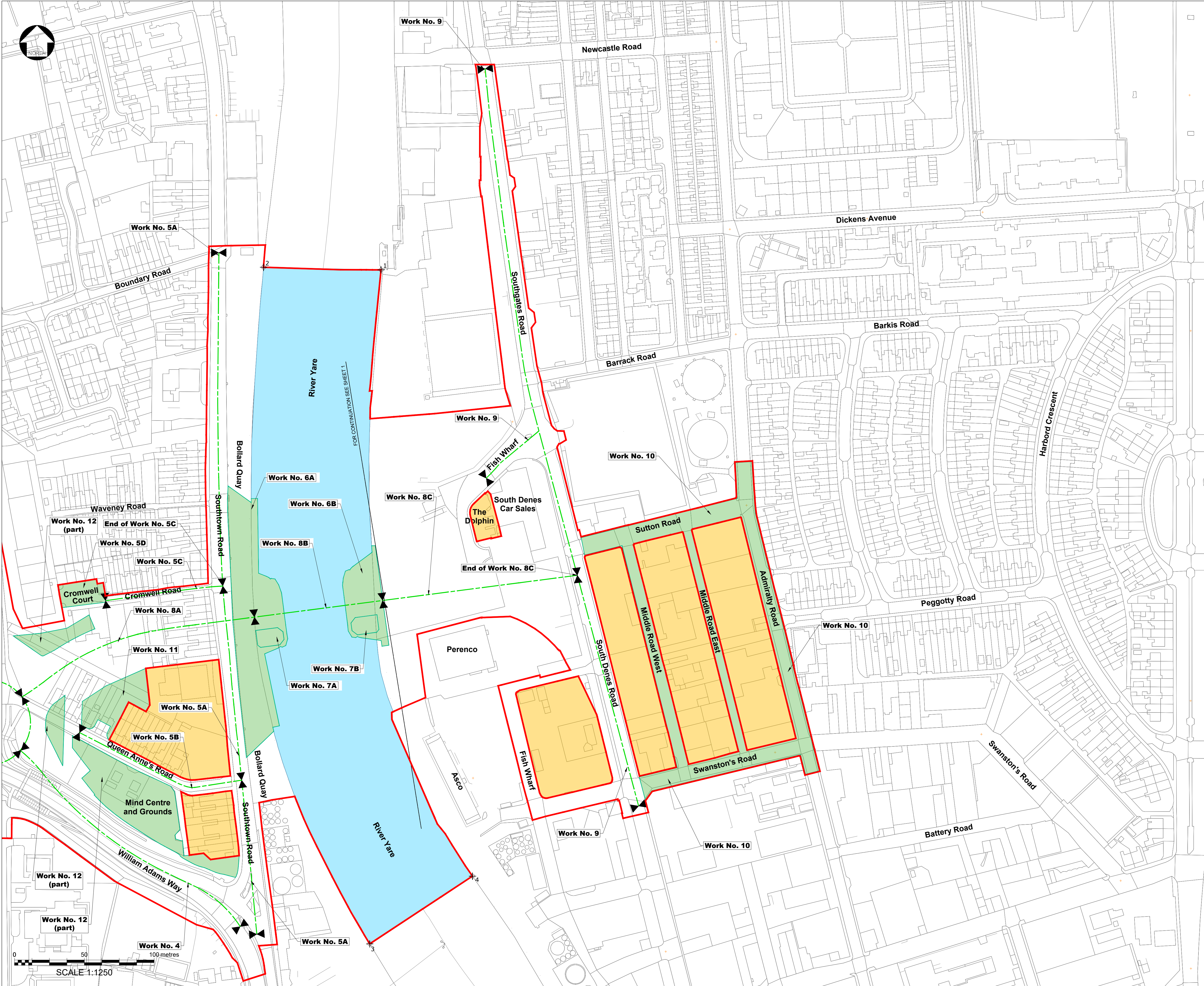
**DRAWING TITLE**  
DCO DOCUMENT 2.6  
WORKS PLAN  
SHEET 1 OF 7  
(REGULATION 5(2)(j))

**DRAWING STATUS**  
FOR DCO EXAMINATION

JC	MO	AG	MK
1:1250	14/08/2019	P01	

GYTRC-WSP-HGN-XX-DR-CB-1024





- Key:**
- Order Limits
  - Area excluded from Order Limits
  - Start / End of Linear Work
  - Linear Work Centre Line
  - Non-Linear Work Limit of Deviation
  - Area of Deemed Marine Licence
  - Point reference to co-ordinates identifying the area to which the deemed marine licence relates

- Notes:**
- The numbered linear and non-linear works are references to the works in Schedule 1 (Authorised Development) to the Development Consent Order.
  - This plan should be read in conjunction with the Development Consent Order (DCO) and the documents it refers to, in particular the DCO article entitled 'Limits of Deviation' and DCO Schedule 1 (Authorised Development).

Mapping reproduced by permission of Ordnance Survey on behalf of HMSO.  
© Crown copyright and database rights 2018 Ordnance Survey 100019340.

P01	JT	MO	AG	04/09/2019
-----	----	----	----	------------

REVISION	DRAWN	CHECKED	APPROVED	DATE
DESCRIPTION				

 **Norfolk County Council**  
Tom McCabe  
Executive Director of  
Community and Environmental Services  
Norfolk County Council  
County Hall, Marlaneau Lane  
Norwich NR1 2SE

PROJECT TITLE  
**GREAT YARMOUTH  
THIRD RIVER CROSSING**

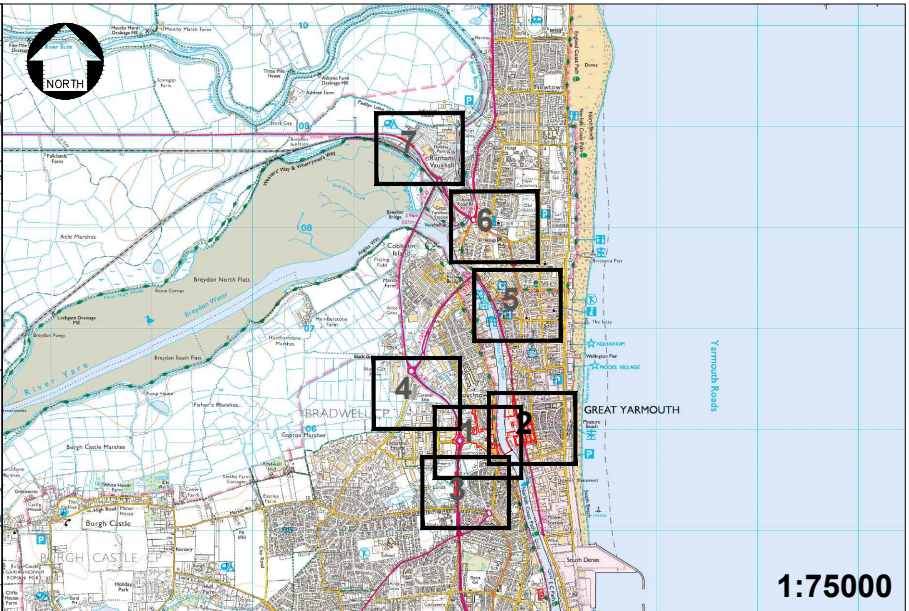
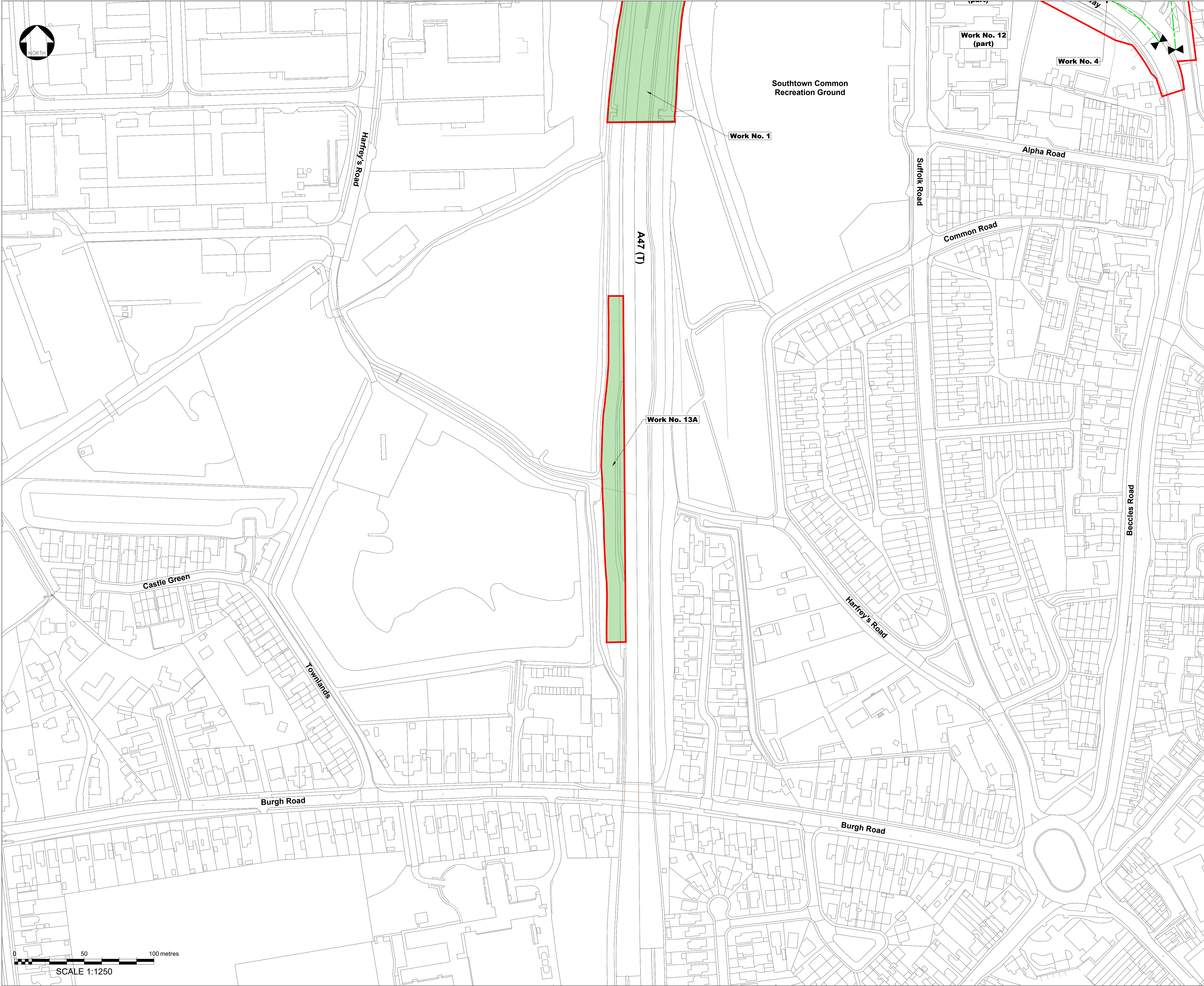
DRAWING TITLE  
DCO DOCUMENT 2.6  
WORKS PLAN  
SHEET 2 OF 7  
(REGULATION 5(2)(j))

DRAWING STATUS  
FOR DCO EXAMINATION

JC	MO	AG	MK
1:1250	14/082019	P01	

GYTRC-WSP-HGN-XX-DR-CB-1025






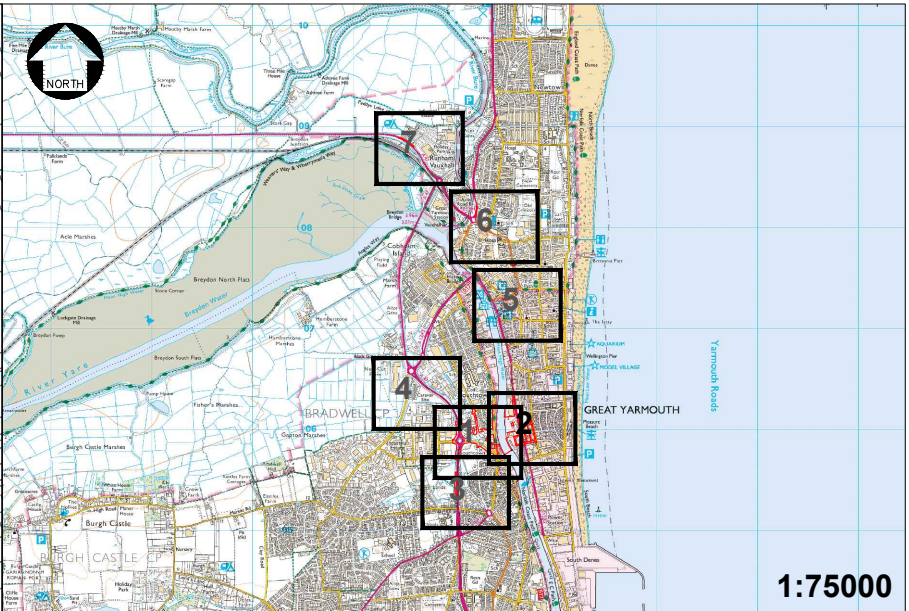
- Key:**
- Order Limits
  - Start / End of Linear Work
  - Linear Work Centre Line
  - Non-Linear Work Limit of Deviation

- Notes:**
- The numbered linear and non-linear works are references to the works in Schedule 1 (Authorised Development) to the Development Consent Order.
  - This plan should be read in conjunction with the Development Consent Order (DCO) and the documents it refers to, in particular the DCO article entitled 'Limits of Deviation' and DCO Schedule 1 (Authorised Development).

Mapping reproduced by permission of Ordnance Survey on behalf of HMSO.  
© Crown copyright and database rights 2018 Ordnance Survey 100019340.

REVISION	DRAWN	CHECKED	APPROVED	DATE
DESCRIPTION				
<div><div><b>Norfolk</b> County Council</div><div>Tom McCabe Executive Director of Community and Environmental Services Norfolk County Council County Hall, Martineau Lane Norwich NR1 2SG</div></div>				
PROJECT TITLE				
GREAT YARMOUTH THIRD RIVER CROSSING				
DRAWING TITLE				
DCO DOCUMENT 2.6 WORKS PLAN SHEET 3 OF 7 (REGULATION 5(2)(j))				
DRAWING STATUS				
FOR DCO APPLICATION				
JC	MO	AG	MK	
1:1250		12/04/2019		P00
GYTRC-WSP-HGN-XX-DR-CB-1026				





**Key:**

Order Limits

Non-Linear Work Limit of Deviation

- Notes:**
1. The numbered linear and non-linear works are references to the works in Schedule 1 (Authorised Development) to the Development Consent Order.
  2. This plan should be read in conjunction with the Development Consent Order (DCO) and the documents it refers to, in particular the DCO article entitled 'Limits of Deviation' and DCO Schedule 1 (Authorised Development).

Mapping reproduced by permission of Ordnance Survey on behalf of HMSO.  
© Crown copyright and database rights 2018 Ordnance Survey 100019340.


REVISION	DRAWN	CHECKED	APPROVED	DATE
DESCRIPTION				



**Norfolk** County Council

**Tom McCabe**  
Executive Director of  
Community and Environmental Services  
Norfolk County Council  
County Hall, Martineau Lane  
Norwich NR1 2SG

PROJECT TITLE

**GREAT YARMOUTH  
THIRD RIVER CROSSING**

DRAWING TITLE

DCO DOCUMENT 2.6  
WORKS PLAN  
SHEET 4 OF 7  
(REGULATION 5(2)(j))

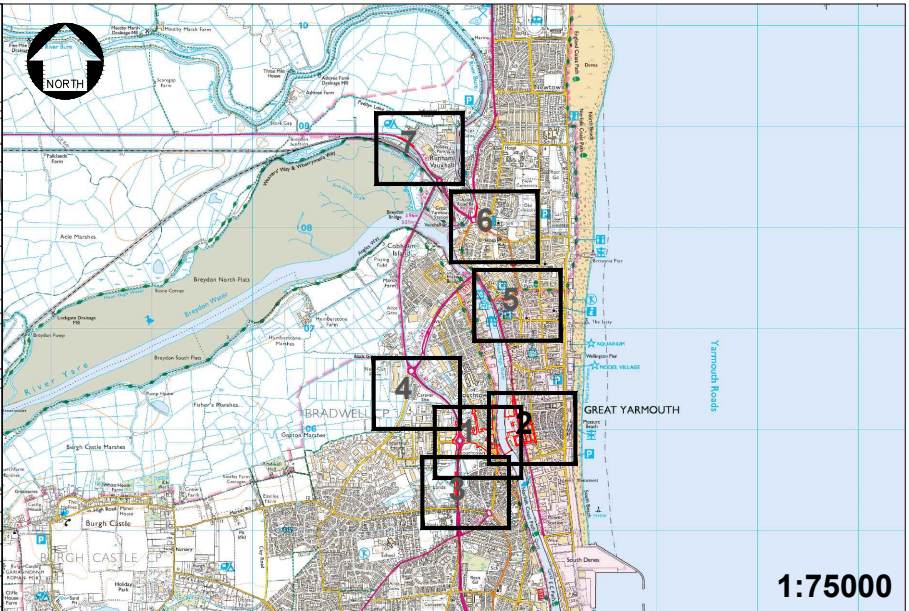
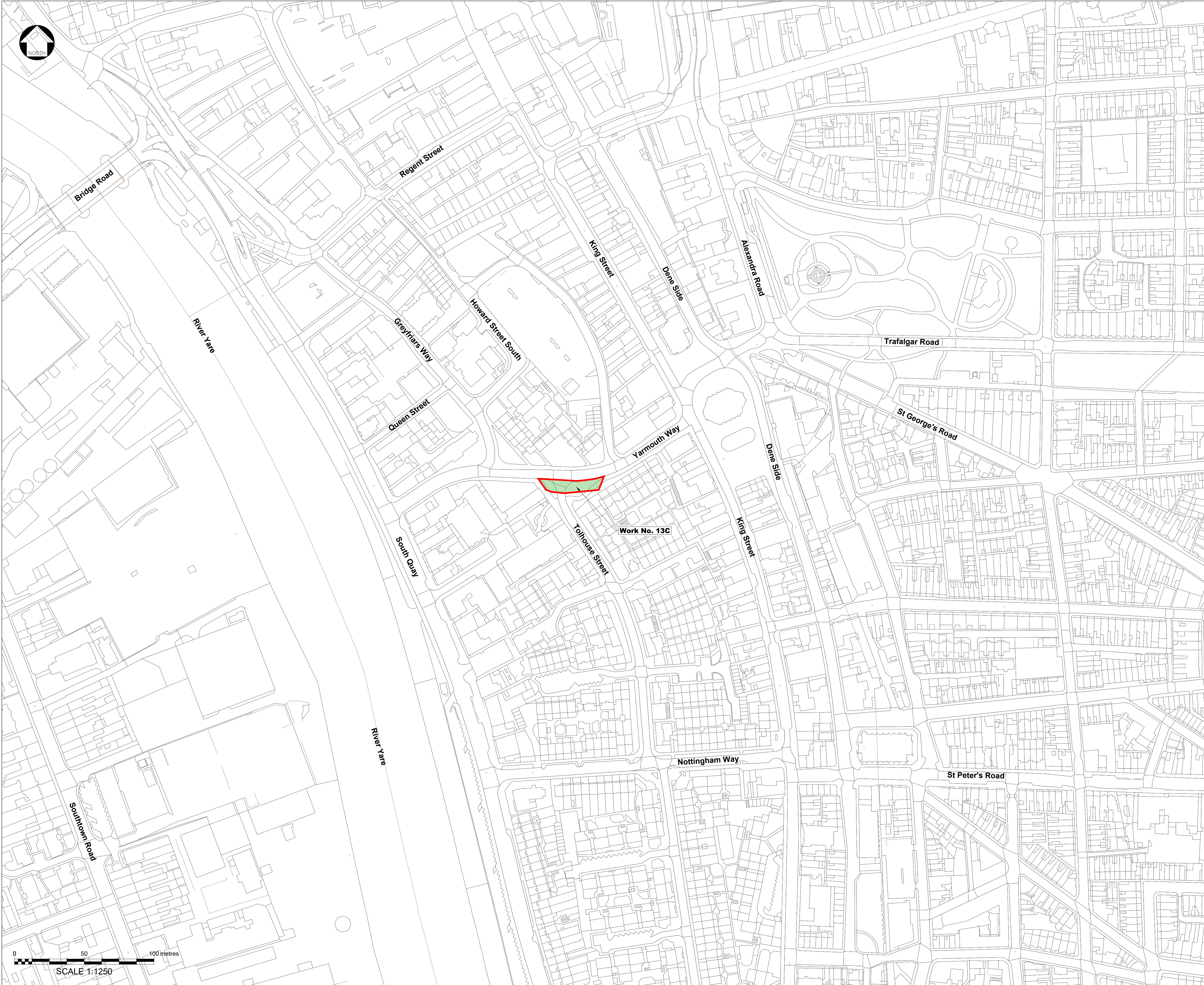
DRAWING STATUS

FOR DCO APPLICATION

JC	MO	AG	MK
1:1250	12/04/2019	P00	

GYTRC-WSP-HGN-XX-DR-CB-1027






**Key:**

Order Limits

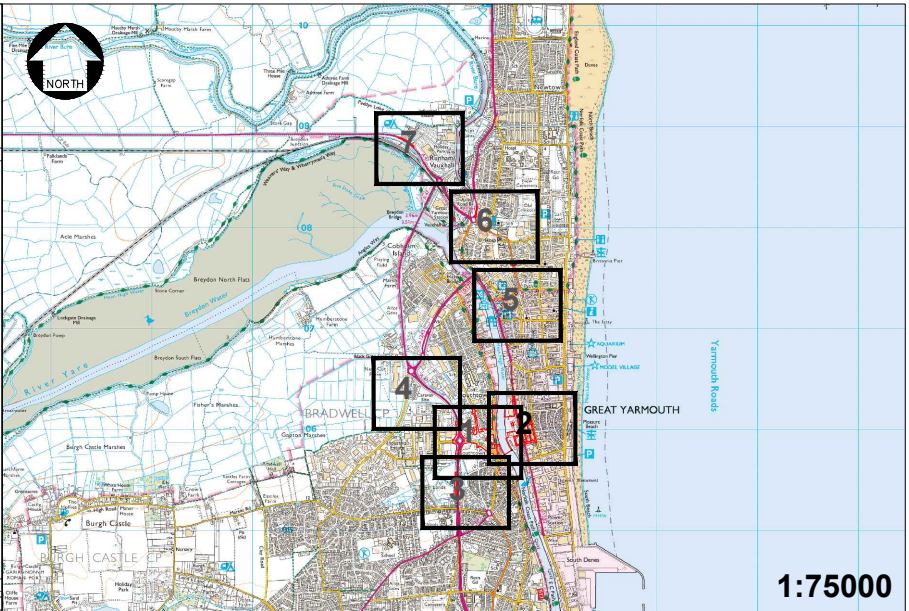
Non-Linear Work Limit of Deviation

- Notes:**
1. The numbered linear and non-linear works are references to the works in Schedule 1 (Authorised Development) to the Development Consent Order.
  2. This plan should be read in conjunction with the Development Consent Order (DCO) and the documents it refers to, in particular the DCO article entitled 'Limits of Deviation' and DCO Schedule 1 (Authorised Development).

Mapping reproduced by permission of Ordnance Survey on behalf of HMSO.  
© Crown copyright and database rights 2018 Ordnance Survey 100019340.

REVISION	DRAWN	CHECKED	APPROVED	DATE
<div>DESCRIPTION</div> <div><div></div><div><div>Norfolk County Council</div><div>Tom McCabe</div><div>Executive Director of Community and Environmental Services</div><div>Norfolk County Council</div><div>County Hall, Martineau Lane</div><div>Norwich NR1 2SG</div></div></div>				
<div>PROJECT TITLE</div> <div>GREAT YARMOUTH THIRD RIVER CROSSING</div>				
<div>DRAWING TITLE</div> <div>DCO DOCUMENT 2.6 WORKS PLAN SHEET 5 OF 7 (REGULATION 5(2)(j))</div>				
<div>DRAWING STATUS</div> <div>FOR DCO APPLICATION</div>				
JC	MO	AG	MK	
1:1250		12/04/2019		P00
GYTRC-WSP-HGN-XX-DR-CB-1028				





**Key:**

Order Limits

Non-Linear Work Limit of Deviation

- Notes:**
- 1. The numbered linear and non-linear works are references to the works in Schedule 1 (Authorised Development) to the Development Consent Order.
  - 2. This plan should be read in conjunction with the Development Consent Order (DCO) and the documents it refers to, in particular the DCO article entitled 'Limits of Deviation' and DCO Schedule 1 (Authorised Development).

Mapping reproduced by permission of Ordnance Survey on behalf of HMSO.  
© Crown copyright and database rights 2018 Ordnance Survey 100019340.

REVISION	DRAWN	CHECKED	APPROVED	DATE
DESCRIPTION				



**Norfolk** County Council

Tom McCabe  
Executive Director of  
Community and Environmental Services  
Norfolk County Council  
County Hall, Martineau Lane  
Norwich NR1 2SG

PROJECT TITLE

**GREAT YARMOUTH  
THIRD RIVER CROSSING**

DRAWING TITLE

DCO DOCUMENT 2.6  
WORKS PLAN  
SHEET 6 OF 7  
(REGULATION 5(2)(j))

DRAWING STATUS

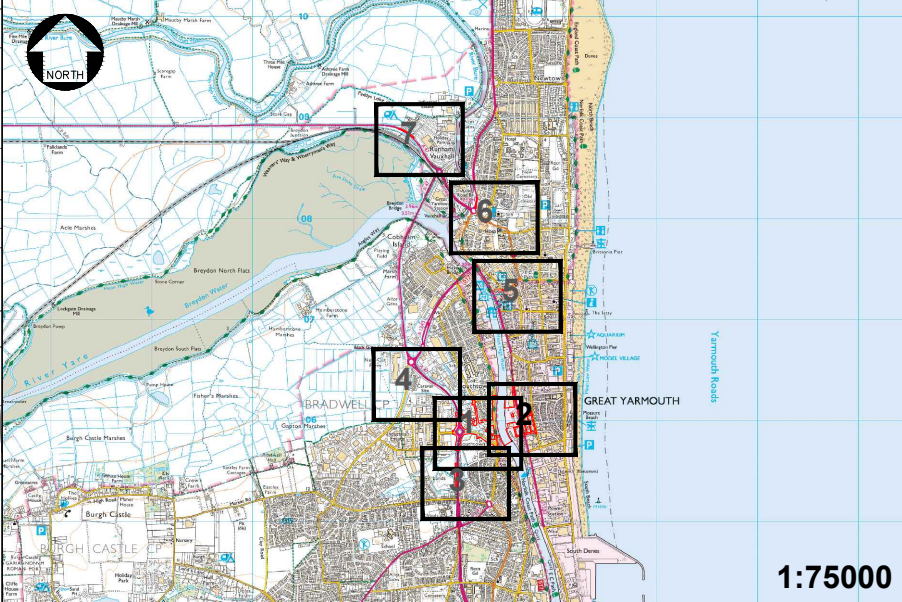
FOR DCO APPLICATION

JC	MO	AG	MK
1:1250	12/04/2019	P00	

GYTRC-WSP-HGN-XX-DR-CB-1029







1:75000

Key:



Order Limits



Non-Linear Work Limit of Deviation

Notes:

1. The numbered linear and non-linear works are references to the works in Schedule 1 (Authorised Development) to the Development Consent Order.
2. This plan should be read in conjunction with the Development Consent Order (DCO) and the documents it refers to, in particular the DCO article entitled 'Limits of Deviation' and DCO Schedule 1 (Authorised Development).

Mapping reproduced by permission of Ordnance Survey on behalf of HMSO.  
© Crown copyright and database rights 2018 Ordnance Survey 100019340.


REVISION	DRAWN	CHECKED	APPROVED	DATE
DESCRIPTION				



**Norfolk** County Council  
Tom McCabe  
Executive Director of  
Community and Environmental Services  
Norfolk County Council  
County Hall, Martineau Lane  
Norwich NR1 2SG

PROJECT TITLE  
**GREAT YARMOUTH  
THIRD RIVER CROSSING**

DRAWING TITLE  
DCO DOCUMENT 2.6  
WORKS PLAN  
SHEET 7 OF 7  
(REGULATION 5(2)(j))

DRAWING STATUS  
FOR DCO APPLICATION

JC	MO	AG	MK
1:1250	12/04/2019	P00	

GYTRC-WSP-HGN-XX-DR-CB-1030

